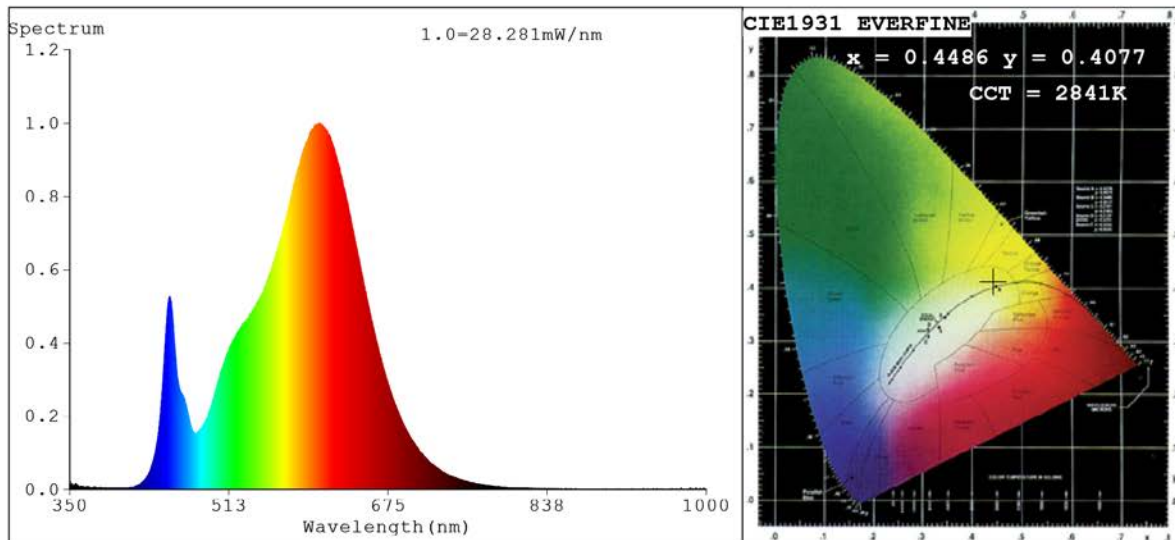


Spectrum Test Report



Color Parameters:

Chromaticity Coordinate: $x=0.4486$ $y=0.4077$ $u'=0.2565$ $v'=0.5246$
 CCT=2841K(Duv=-0.0000) Dominant WL:Ld =583.5nm Purity=57.0%
 Ratio:R=23.9% G=73.8% B=2.3%;;Peak WL:Lp=604.9nm FWHM=115.7nm
 Render Index:Ra=81.6 CRI=76.0 TM30:Rf=81 Rg=96 Lav=591.7nm
 R1 =80 R2 =91 R3 =96 R4 =79 R5 =80 R6 =90 R7 =81
 R8 =56 R9 =2 R10=80 R11=79 R12=71 R13=83 R14=98 R15=72

Photo Parameters:

Flux = 1317 lm Eff. : 110.79 lm/W Fe = 3.964 W

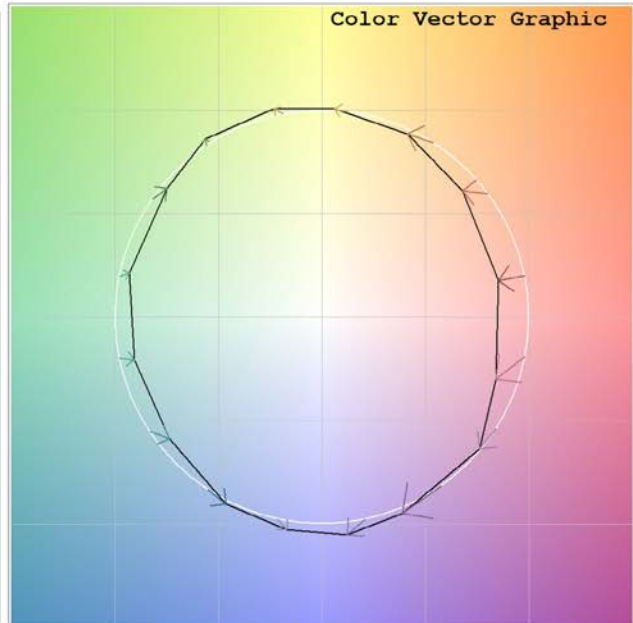
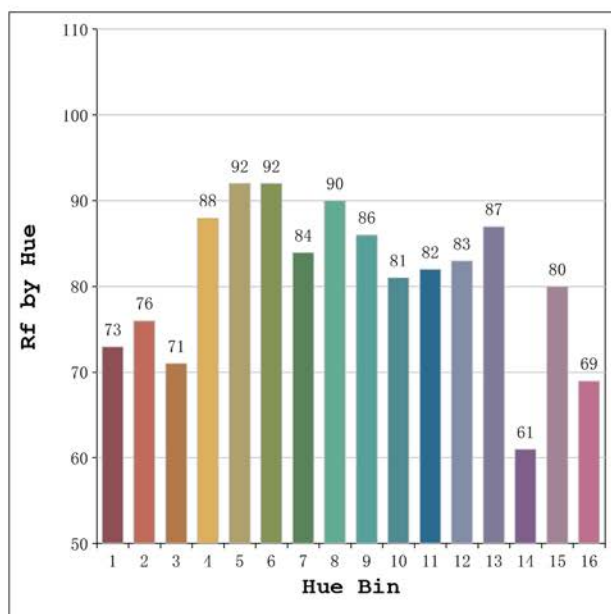
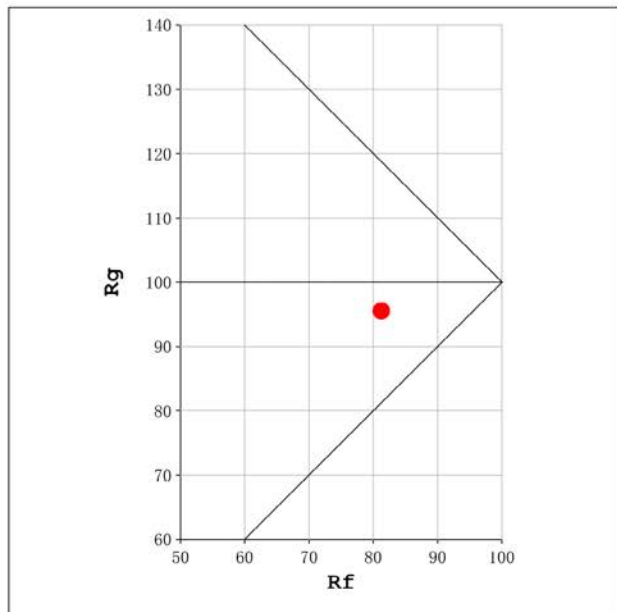
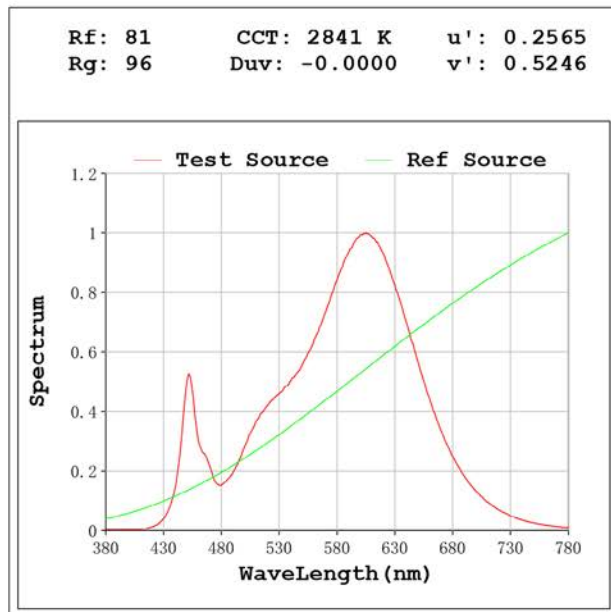
Electrical parameters:

V = 47.998 V I = 0.2476 A P = 11.88 W PF = 1.000

Status: Integral T = 885 ms Ip = 49680 (76%)

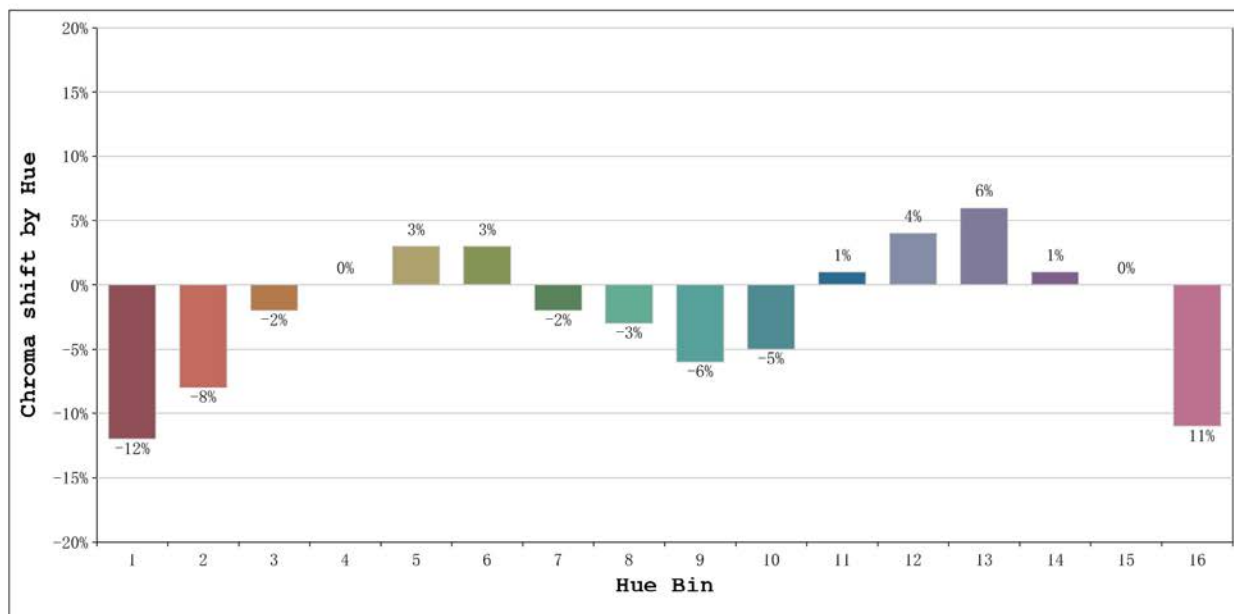
Model:Castellón IP67 2800K
 Tester:Sergio Carneros
 Temperature:27Deg
 Manufacturer:Luz Negra S.L.

Number: 33.211
 Date:2024-11-21 09:09:54
 Humidity:35%
 Remarks:100cm de tira flexible



Model:Castellón IP67 2800K
 Tester:Sergio Carneros
 Temperature:27Deg
 Manufacturer:Luz Negra S.L.

Number: 33.211
 Date:2024-11-21 09:09:54
 Humidity:35%
 Remarks:100cm de tira flexible



			Graphic shift(%)	
Hue Bin	Hue Angle	Rf	Chroma	Hue
1	0.0° - 22.5°	73	-12	0
2	22.5° - 45.0°	76	-8	8
3	45.0° - 67.5°	71	-2	13
4	67.5° - 90.0°	88	0	7
5	90.0° - 112.5°	92	3	4
6	112.5° - 135.0°	92	3	0
7	135.0° - 157.5°	84	-2	-7
8	157.5° - 180.0°	90	-3	-1
9	180.0° - 202.5°	86	-6	2
10	202.5° - 225.0°	81	-5	8
11	225.0° - 247.5°	82	1	11
12	247.5° - 270.0°	83	4	6
13	270.0° - 292.5°	87	6	-9
14	292.5° - 315.0°	61	1	-22
15	315.0° - 337.5°	80	0	-12
16	337.5° - 360.0°	69	-11	-13

Model:Castellón IP67 2800K
Tester:Sergio Carneros
Temperature:27Deg
Manufacturer:Luz Negra S.L.

Number: 33.211
Date:2024-11-21 09:09:54
Humidity:35%
Remarks:100cm de tira flexible